

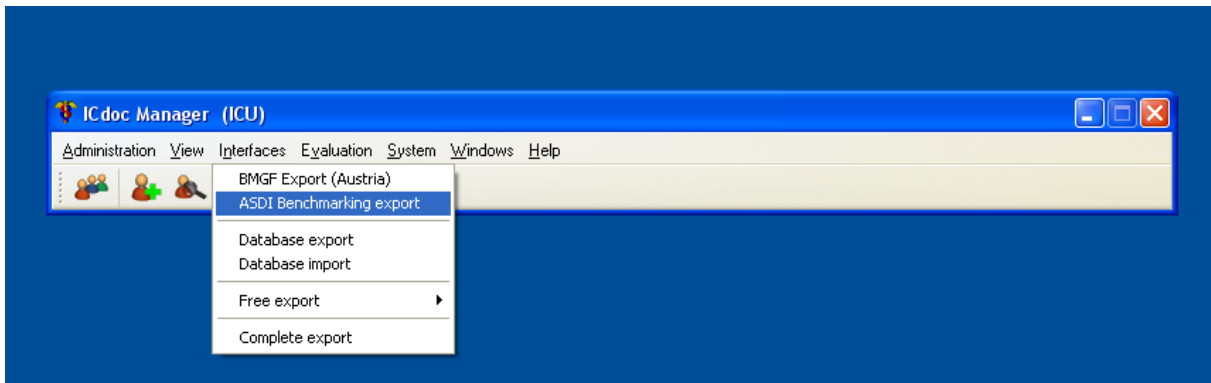


ASDI

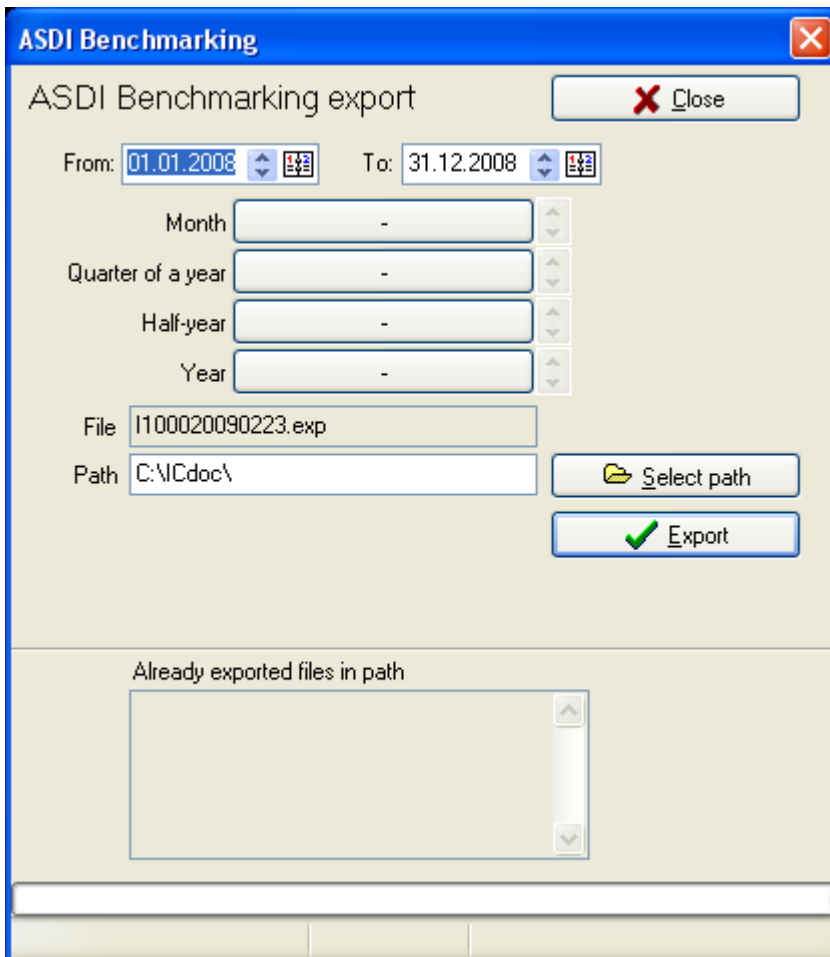
Benchmarking

Instruction for data export

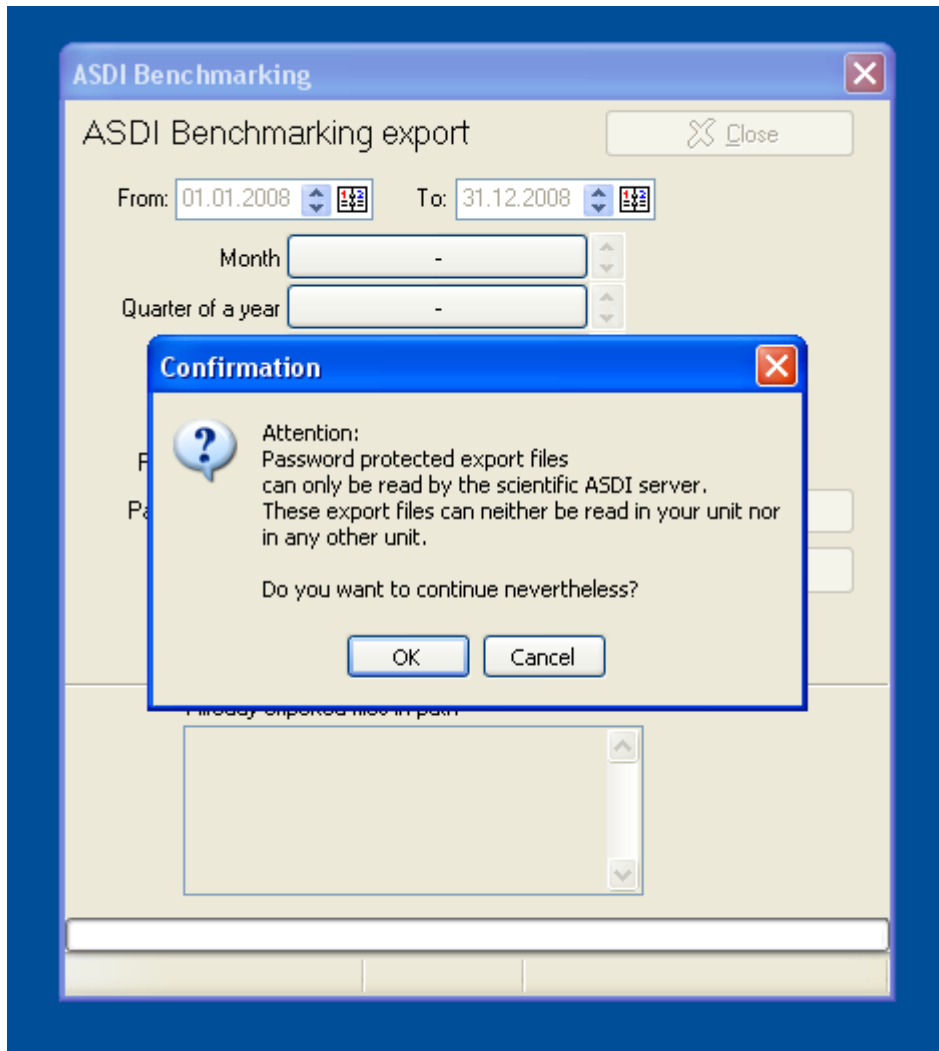
Please Start ICdoc and choose the menu „Interfaces“, then „ASDI Benchmarking Export“.



In the upcoming dialog Box please fill in the first day of your documentation (e.g.1st January 2020) in the field „from“. The field „until“ will show automatically the actual day.



You have then to choose the directory where you save the file. Then the export can be started. After you press the appropriate button, a message appears, which informs you that the exported data can only be read from our scientific server – please press “Yes”.

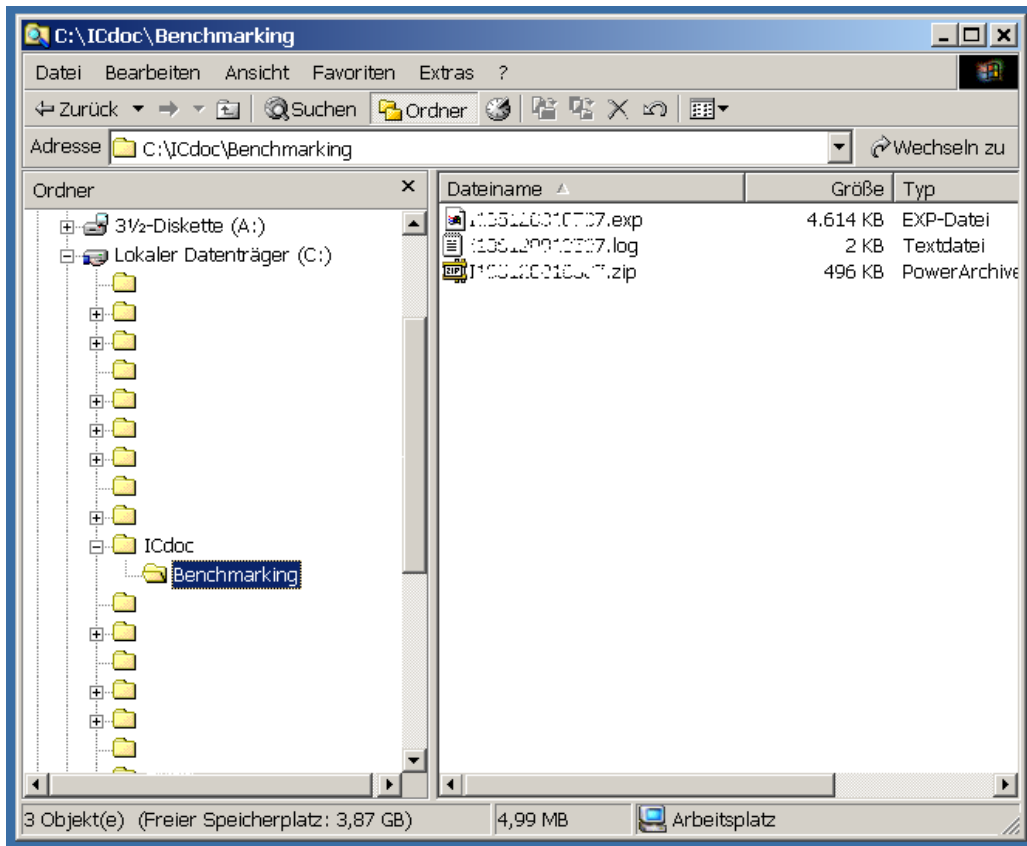


The export is now finished. Start the Windows Explorer and change into the chosen directory. There you will find three files with different endings (exp, log, zip). Please send **ONLY** the ZIP FILE!

Exp: The non-protected data, please do not send this data.

Log: Logbook of the Benchmarking Export.

Zip: Packed and protected export data – please send this data to the ASDI Office via e-mail.



Thank you for your effort!

Impressum:

Österreichisches Zentrum für Dokumentation
und Qualitätssicherung in der Intensivmedizin
Langenzersdorferstr. 28, 1210 Wien

Tel.: +43 1 9522842

Fax: +43 1 9522842 10

eMail: office@asdi.ac.at

Web: www.asdi.ac.at

